

2014 **Buying Guide**

Geibel Catholic High School S2199
Connellsville, PA



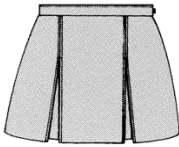
Become a fan! Join us on  Facebook!

Phone Orders: 1.888.637.3037 ▪ Online Orders: schoolbelles.com

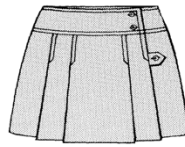
**Girls' Program
Grades 7-12**

**Geibel Catholic High School
Connellsville, PA
S2199**

**Styles
3521/1521**



Style 3525/1525/237



WAIST SIZE (in inches)	SKIRT SIZE (in inches)
24 - 40 <small>ALL SIZES</small>	18" = XS 20" = S 22" = M 25" = L
42, 44, 46, 48 <small>EVEN SIZES ONLY</small>	20" = S 22" = M

ORDER SKIRTS BY WAIST & LENGTH
EX: 26XS, 34S, 40L, 46M

NOTE: ADD \$10 TO PRICE OF SKIRT WITH WAIST OF 42"-48"

Style 1533



SKIRTS		PRICE	GRADE
STYLE	DESCRIPTION		
3521	Two Kick Pleat Skirt	\$47.95	7-12
3525	Kilt Skirt	\$50.95	7-12

Color: 158-Navy/green plaid

SKIRTS		PRICE	GRADE
STYLE	DESCRIPTION		
1521	Two Kick Pleat Skirt	\$40.95	7-12
1525	Kilt Skirt	\$43.95	7-12
1533	Side Pleat Skort w/Knit Short	\$41.95	7-12

Color: 158-Navy/green plaid

SLACKS						
STYLE	DESCRIPTION	12-16R	6X-18X	1J-15J	17J-21J	GRADE
8263	Matchstick PantΔ	\$17.75	-	\$23.75	\$25.75	7-12
STYLE	DESCRIPTION	12-16R	8X-20X	1J-15J	17J-21J	GRADE
8265	Flat Front SlackΔ	\$18.75	\$22.75	\$24.75	\$26.75	7-12
STYLE	DESCRIPTION	12-16R	6X-18X	3J-15J	17J-21J	GRADE
8364	Girls' Flat Front SlackΔ	\$18.75	\$22.75	\$24.75	\$26.75	7-12

Colors: 15-Navy twill, 22-Black twill, 27-Khaki twill

STYLE	DESCRIPTION	12-16 R/S	6X-18X	3J-25J	GRADE
3264	Mid-Rise Slack ■	\$27.00	\$29.00	\$31.00	7-12

Colors: 1015-navy brushed twill, 1022-black brushed twill, 1027-khaki brushed twill

POLO SHIRTS					
STYLE	DESCRIPTION	LY-XLY	SA-XLA	2XLA-3XLA	GRADE
5705	Premium Pique Polo Short Sleeveo	\$23.45	\$25.45	\$27.45	7-12
5706	Premium Pique Polo Long Sleeveo	\$25.45	\$27.45	\$29.45	7-12
STYLE	DESCRIPTION	LY-XLY	SA-XLA	2XLA-3XLA	GRADE
5708	Premium Ribbed Bottom Short Sleeveo	\$28.59	\$30.59	\$33.59	7-12
5709	Premium Ribbed Bottom Long Sleeveo	\$30.59	\$32.59	\$35.59	7-12

Colors: 17/6463-White with school monogram, 19/6463-Dark Green with school monogram

SOCKS			TIGHTS		
Style		Price	Style	Description	Price
1601	Acrylic Knee High	\$ 4.00	1625	Opaque Tight	Youth \$ 5.25
1602	Cotton Knee High	\$ 4.30	1625	Opaque Tight	Adult \$ 9.25
1605	Opaque Knee High	\$ 4.00	8602	Bamboo Cable Knee High (3Pack)	\$ 12.65
1621	Pima Knee High	\$ 4.55	8621	Bamboo Knee High (3 Pack)	\$ 11.90
1622	Pima Ankle Sock	\$ 3.50	8625	Bamboo Opaque Tight	Youth \$ 8.75
1650	Turn Cuff Sock	\$ 3.55	8625	Bamboo Knee High (3 Pack)	Adult \$ 10.75
1653	Cotton Crew Sock	\$ 3.55			

Colors: 15-Navy, 17-White, 19-Dark Green



BELTS		
Style		Price
6305	Wide Leather Belt	\$ 17.95
6309	Narrow Leather Belt	\$ 12.75
6310	Braided Leather Belt	Youth \$ 9.95
6310	Braided Leather Belt	Adult \$ 10.25

Colors: 15-Navy, 22-Black, 23-Brown

29-May-14

Rep: 608

"Match the symbols & see how you SAVE!"

- Buy 4 **PREMIUM** & Save \$5 ♦ Buy 4 & Save \$3
- Buy 3 **PREMIUM** & Save \$7 △ Buy 3 & Save \$3

* "Buy & Save" promotion is limited to same size and same style number; colors may be combined.

**Boys' Program
Grades 7-12**

**Geibel Catholic High School
Connellsville, PA S2199**

TROUSERS						
STYLE	DESCRIPTION	10-16R	8-20H	28-42M/L	28-42XL	GRADE
8302	Flat Front Pant△	\$17.75		\$19.75	\$24.75	7-12
8332	Narrow Leg Flat Front Pant△	\$17.75		\$19.75	\$24.75	7-12
		12-16R/S	25H-38H	27P-32P	31-48M/L/XL	GRADE
5202	Premium Plain Front Pants■	\$26.25	\$29.25	\$28.25	\$30.25	7-12
5203	Premium Pleated Front Pants■	\$26.25	\$29.25	\$28.25	\$30.25	7-12

Colors: 15-Navy twill, 22-Black twill, 27-Khaki twill

POLO SHIRTS					
STYLE	DESCRIPTION	LY-XLY	SA-XLA	2XLA-3XLA	GRADE
5705	Premium Pique Polo Short Sleeve	\$23.45	\$25.45	\$27.45	7-12
5706	Premium Pique Polo Long Sleeve	\$25.45	\$27.45	\$29.45	7-12

Colors: 17/6463-White with school monogram, 19/6463-Dark Green with school monogram

SOCKS		
Style		Price
1622	Pima Ankle Sock	\$ 3.50
1653	Cotton Crew Sock	\$ 3.50
8653	Bamboo Crew Socks	\$ 8.95



Colors: 15-Navy, 17-White, 22-Black, 27-Khaki

BELTS			
Style			Price
6305	Wide Leather Belt		\$ 17.95
6309	Narrow Leather Belt		\$ 12.75
6310	Braided Leather Belt	Youth	\$ 9.95
6310	Braided Leather Belt	Adult	\$ 10.25

Colors: 15-Navy, 22-Black, 23-Brown

"Match the symbols & see how you SAVE!"

○ Buy 4 **PREMIUM** & Save **\$5** ◆ Buy 4 & Save **\$3**
 ■ Buy 3 **PREMIUM** & Save **\$7** △ Buy 3 & Save **\$3**

*"Buy & Save" promotion is limited to same size and same style number; colors may be combined.

VISIT THE SCHOOLBELLES® STORE NEAR YOU!

Check our website for all store locations!

Visit us at www.schoolbelles.com

CORPORATE OFFICE
Cleveland, OH (West)
4747 W. 160th Street
Cleveland, OH 44135
Toll Free: 1.888.637.3037

Pittsburgh, PA
255 Mt. Nebo Pointe Drive
Pittsburgh, PA 15237
412.630.8480

Retail Store Hours:

Closed all major holidays, as well as Good Friday and Holy Saturday. Please call ahead for holiday hours.

	Sunday	Monday	Tuesday	Wednesday	Thursday	Friday	Saturday
REGULAR HOURS	CLOSED	CLOSED	10a - 5p	12p - 5p	12p - 7p	10a - 4p	10a - 4p
SUMMER HOURS JUL. 14 - SEP. 6	CLOSED	10a - 7p	10a - 7p	10a - 7p	10a - 7p	10a - 5p	10a - 5p

Questions? Comments? Suggestions? Order Forms?

We care and want to hear what you think. Just Call, Click or Write.

Call

Customer Service at 1-888-637-3037.

Monday - Friday 9am - 4:30pm (EST) *SPRING/FALL/WINTER*

August 1 - August 29, Monday-Friday 9a - 5p (EST)

Also Saturday August 2, 9, 16 & 23; 9a - 2p (EST)

Click

www.schoolbelles.com and select "Contact Us".

Write

Schoolbelles® Headquarters
4747 West 160th Street
Cleveland, OH 44135



*Each remittance of payment by check is considered authorization to convert that particular check into an immediate electronic fund transfer from your checking account.

PRICES SUBJECT TO CHANGE.

Find us on Facebook 